



TREE

TRIMMING

When Dakota Electric Association must clear woods or prune trees, our contractors follow these guidelines:

- All trees within 35 feet of either side of a distribution line (pole line center) are subject to pruning or removal by Dakota Electric.
- Trees that exceed a mature height of 15 feet should be removed if they are a distance 15 feet or less on either side of the pole line.
- Oak and elm trees will not be pruned during infectious months (April through July); except in emergency situations.
- Dakota Electric does not remove tree stumps or diseased wood.
- All branches that hang over the lines will be removed.
- Customers will be notified if trees are to be pruned or removed.



Your Touchstone Energy® Partner
 4300 220th St. W.
 Farmington, MN 55024
 (651) 463-6212
www.dakotaelectric.com



BEFORE You PLANT



Your Touchstone Energy® Partner 

4300 220th St. W., Farmington, MN 55024
 (651) 463-6212 • www.dakotaelectric.com



TREE PLANTING GUIDELINES

We all appreciate the beauty and environmental benefits of trees and other landscaping. Unfortunately, many power outages are caused by trees and limbs falling on power lines during bad weather, interrupting the continuous electrical service Dakota Electric customers have come to expect and deserve. To reduce the potential for outages, Dakota Electric must maintain power line clearance by removing or pruning trees and shrubs that might interfere with the safety and reliability of your service.

You can help maintain power line access and clearance by planning ahead before planting trees and shrubs. The guidelines in this brochure will help ensure safe and reliable service for all Dakota Electric customers.

NEW SHADE TREES

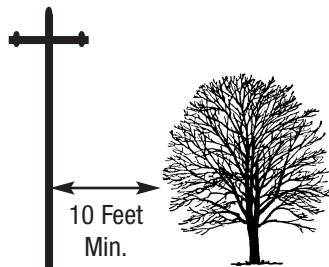
Large trees should not be planted closer than 35 feet from the center of the pole line. This allows 10 feet clearance from the electrical line for mature trees that have a branch spread of 40 feet in diameter.

NEW SMALL TREES AND LARGE SHRUBS

Small trees and large shrubs may be planted within 35 feet of either side of power lines and should not exceed 15 feet in height. When planting, consider Dakota Electric's need for future access to the line for maintenance and repair. Evaluate your landscape to ensure that as trees or shrubs mature, they will not make contact with power lines.

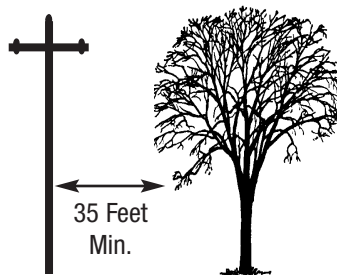
If you have any tree-related questions or concerns, contact Dakota Electric at 651-463-6287.

TREES UNDER 15 FEET



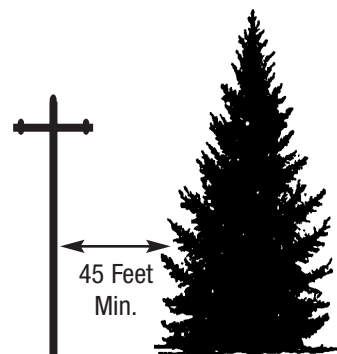
Trees that grow no taller than 15 feet may be planted within 10 feet of the electrical wires, but no closer. Trees that fit this definition include Sumac, Lilac, Dogwood, Bush Honeysuckle, Nanking Cherry, Ironwood, Russian Olive and Hawthorn.

TREES UNDER 40 FEET



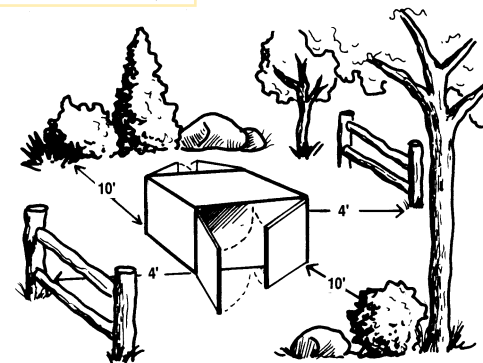
Trees that grow no taller than 40 feet may be planted within 35 feet of the electrical wires, but no closer. Trees that fit this definition include Ash, Birch, Butternut, Honey Locust, Sunburst and Norway Maple.

TREES UNDER 60 FEET



Trees that grow up to 60 feet must be planted at least 45 feet from the electrical wires and no closer than 35 feet from buildings to allow proper root development and minimize root damage to buildings. Trees that fit this definition include Oak, Elm, Walnut and miscellaneous pines.

ELECTRICAL BOXES



Mature trees and shrubs need to maintain 10 feet clearance in front of doors and 4 feet on all other sides of the box.



CALL BEFORE YOU DIG

Anyone digging in Minnesota must call Gopher State One Call (GSOC) before they begin digging. GSOC is a free service designed to protect you and your property from underground utility damage and liability. The person doing the work is responsible for calling. If a property owner hires a professional contractor to do excavation work, the contractor is responsible for calling GSOC.

**GOPHER STATE ONE CALL
(651) 454-0002
OR
1-800-252-1166**