

SEPTEMBER 2019

CIRCUITS

FOR DAKOTA ELECTRIC MEMBERS

GRAND
OPENING OF
DAKOTA
SOLAR III



2-4
TECHNOLOGY
The future of EVs &
Randolph Solar

5
SAVE ENERGY
Promotions
& programs

6
**DID YOU
KNOW?**
Co-op facts & stats

7
CO-OP NEWS
Advanced meter
update

Contact Us

Member Service & Drive-Up Window

7 a.m. – 7 p.m. Monday – Friday
651-463-6212 or 1-800-874-3409
Minnesota Relay Service 711

Lobby 7 a.m. – 4:30 p.m. Monday – Friday

4300 220th Street West, Farmington, MN 55024

24-Hour Outage & Emergency Service

651-463-6201 or 1-800-430-9722

Underground Cable Locations

Gopher State One Call 811 or 651-454-002 or
1-800-252-1166

Tree Trimming & Street Lights

651-463-6287

*Dakota Electric is an equal opportunity/
affirmative action employer*

dakotaelectric.com

customerservice@dakotaelectric.com

*Dakota Electric Association® and Dakota Electric®
are registered service marks of the cooperative.*

Dakota Electric Association

BOARD of Directors

DISTRICT 1

John (Jack) DeYoe

David Jones

Gerald F. Pittman | *Chair*

DISTRICT 2

Janet L. Lekson | *MREA Director*

Jim Sheldon | *Treasurer*

Clay Van De Bogart | *GRE Director*

DISTRICT 3

Kenneth H. Danner

William F. Holton | *Secretary*

Margaret D. Schreiner | *GRE Director*

DISTRICT 4

Paul Bakken | *Vice Chair*

Judy H. Kimmes

Stacy Miller



Charging ahead

The future of electric vehicles

Electric vehicles (EV) are a growing market for new car purchases with more people making the switch from the gas station to an electrical outlet to fuel their vehicles.

In the early 20th century, electric vehicles made up nearly 40% of the U.S. vehicle market share. Despite early popularity, electric vehicles disappeared as roadways improved and exceeded city limits. The electric vehicle's slower speed and shorter range was not ideal for this type of travel. At the same time, gasoline-powered cars began to improve and became both accessible and affordable. By 1930, electric vehicles had mostly vanished from roads. Interest in electric vehicles made a slight resurgence in the late 1990s, but it was not until 2010 that a more substantial push for electric vehicles developed.

Now more shoppers are choosing to forgo gasoline-powered models and opt for an electric vehicle. Most major car manufacturers are showing support for electric vehicles by developing new models with longer ranges and more affordable prices. The concerns of the past — speed, driving distance and fueling time — are quickly diminishing.

Those who choose to drive electric see savings by fueling at the outlet instead of a gas pump. Additionally, electric vehicles are environmentally friendly and support your local utility like Dakota Electric Association®.

Today, just like a century ago, people primarily charge their electric vehicles at home. At the same time, there are now over twenty thousand public charging outlets in the U.S. With the average American driving less than 40 miles a day and new battery electric vehicles offering 150-370 mile range options, most drivers can find an EV that fits their needs.

EVs also give owners the freedom to choose how they want to power their driving. For example, owners interested in powering their EV with renewable energy, or charging at a cheaper rate, should call Dakota Electric's Energy Experts® at 651-463-6243 for options available. These programs cut fuel cost and offer a convenience not available to drivers of traditional gasoline-powered vehicles.

With the foundation laid for both electric vehicles and their plug-in charging infrastructure, driving electric is becoming the new norm again. As we continue making this electric transportation shift, consumers should contact their local utility for information on electric vehicles and chargers.



ELECTRIC VEHICLE MODELS
AVAILABLE IN THE MIDWEST:
WWW.PLUGINCONNECT.COM >
[RESOURCES](#) > [MNPEVMODELS](#)

— JUKKA KUKKONEN

PlugInConnect, Founder & CEO

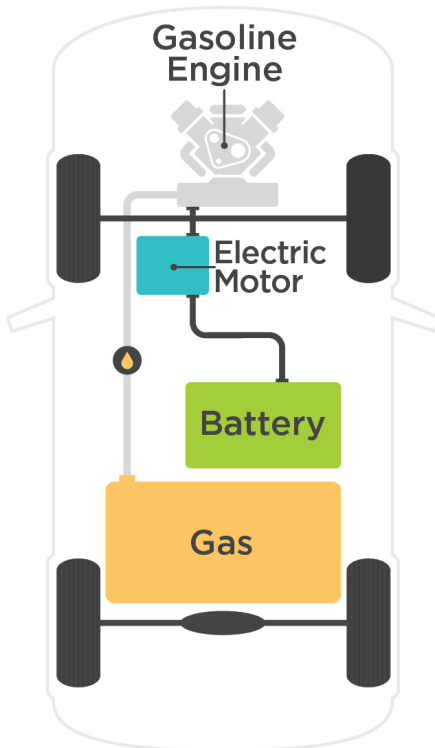


Types of Electric Vehicles

If you're looking to purchase an electric vehicle, use this graphic to help determine the various options. Drivers can choose between three types of electric vehicles (EVs). EVs are classed by the amount of electricity that is used as their energy source.



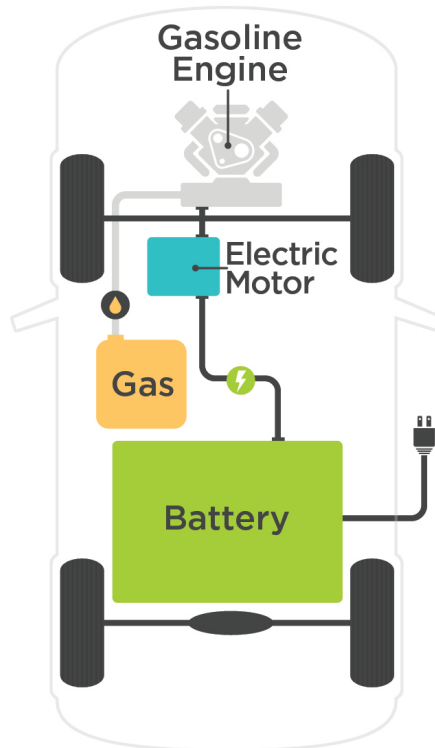
Fuel:
Gasoline



HEV
HYBRID ELECTRIC
VEHICLE



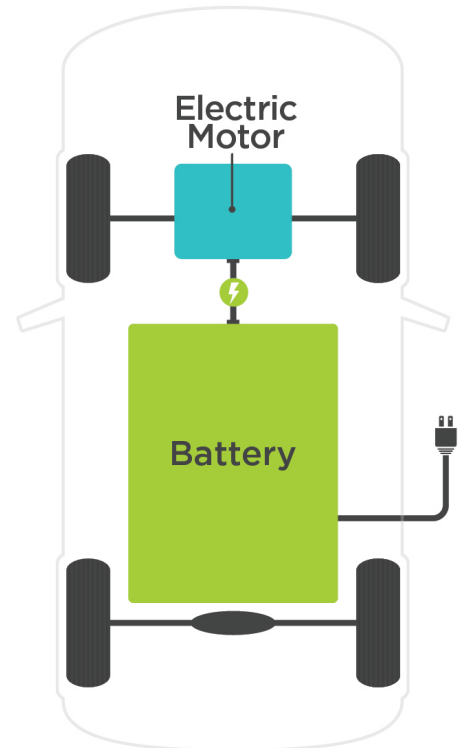
Fuel:
Gasoline and/or
electricity from grid



PHEV
PLUG-IN HYBRID
ELECTRIC
VEHICLE



Fuel:
100% electricity
from grid



BEV
BATTERY
ELECTRIC
VEHICLE

DAKOTA SOLAR III

Dakota Electric Association members are now receiving more electricity from the sun through a new 2-megawatt solar facility built specifically for the cooperative's members.

Dakota Electric's board of directors, along with Great River Energy and ENGIE personnel, held a dedication Friday, July 19, at the joint solar facility in Hampton Township, near Randolph. Representative Pat Garofalo, Senator Rich Draheim and Public Utilities Commissioner John Tuma attended the event along with representatives from Conservation Minnesota, CURE and Center for Energy and Environment.

The 15-acre solar site is expected to have a 25-year life and will produce enough electricity to power about 300 average homes. The 7,776 panels, which track the sun as it moves through the sky, will produce more than 3 million kilowatt-hours of power annually.



CEO Greg Miller speaks during the solar ribbon cutting ceremony.

ENGIE built and owns the solar facility on behalf of Great River Energy. Through a power purchase contract with Great River Energy, Dakota Electric purchases all the solar output for delivery to its member-owners.

"We are pleased to provide this renewable energy resource to our members," Dakota Electric's CEO Greg Miller said. "This project will add to our existing wholesale renewable portfolio that includes wind, solar and hydro."

An added benefit is that the grounds at the solar site are planted with pollinator-friendly plants, so once mature, they will provide habitat that is helpful to bees and other pollinators.



Board Chair Jerry Pittman welcomes the group to the solar ribbon cutting event.

"As Dakota Electric's power supplier, Great River Energy is honored to facilitate this solar energy supply by partnering with ENGIE to develop, build and operate the facility over the next 25 years," said Mark Rathbun, manager, renewable resources, at Great River Energy. "Over this time, Dakota Electric members will see economic and environmental benefits from this partnership."

"Dakota Electric seeks to use our members' money wisely while we strive to be good stewards of the environment," said Dakota Electric Board Chair Jerry Pittman as he welcomed guests. "I'm happy to report this project does this well and the board was happy to approve this project."



TO SEE THE ENERGY PRODUCTION GRAPH AND A TIMELAPSE VIDEO OF THE SOLAR CONSTRUCTION VISIT:
WWW.DAKOTAELECTRIC.COM > RENEWABLE ENERGY > DAKOTA ELECTRIC SOLAR



The board cuts the ribbon at Dakota Electric's third solar site. (L-R): Board Chair Jerry Pittman, Jack DeYoe, Jim Sheldon, David Jones, Janet Lekson, Stacy Miller and Margaret Schreiner.



SAVE ENERGY, SAVE MONEY

PROMOTIONS



ENERGY
WISE MN

EnergyWise® Promotion

BOGO deals!

Buy one LED, get five free or BOGO handheld showerheads.

Promotion valid until Sept. 30, 2019.



FOR MORE INFORMATION, VISIT

WWW.ENERGYWISEMN.COM > SPECIAL PROMOTIONS

PROGRAMS

ChargeWise

Time of Use Program:

An electric vehicle charger installed on Dakota Electric's time-of-use rate will always receive electricity, so you can charge your vehicle whenever needed. A special meter is installed that allows the rate to fluctuate based on the time of day you charge your EV.

Storage Program:

Dakota Electric's storage rate offers members the lowest-cost off-peak electricity for charging an electric vehicle (EV), but the hours available are the most restrictive (11 p.m. – 7 a.m.). Electricity for charging your EV is available only during off-peak hours. Power will not be supplied outside of the off-peak hours and the charger must be hard wired into your circuit panel.



ChargeWise

Wellspring



While the electricity delivered to your home includes increasing amounts of renewable energy, our Wellspring Renewable Energy® program gives members the option to do more for the environment.

Wellspring Renewable Energy Program:

Renewable energy is purchased in 100 kWh blocks. For each 100 kWh block purchased, there is an additional charge on your electric bill of \$0.20 for wind energy or \$2 for solar energy. Members have the option to purchase the same amount of 100 kWh blocks each month, or purchase blocks based on the amount of energy they use.

Revolt



Power your EV with 100% wind energy, for the life of the vehicle, at no extra cost by signing up for Revolt. Submit a copy of your dealership invoice or vehicle title with your Revolt application to Dakota Electric, and we will send you a confirmation packet. Plug-In Electric Vehicles (PEV) and Plug-In Hybrid Electric Vehicles (PHEV) are eligible.



TO ENROLL IN WELLSPRING, REVOLT OR CHARGEWISE
CONTACT THE ENERGY EXPERTS AT 651-463-6243 OR GO
TO WWW.DAKOTAELECTRIC.COM



DID YOU KNOW?



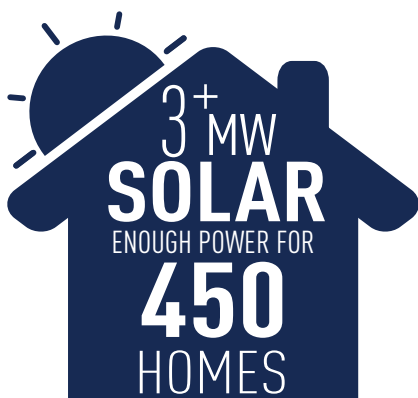
Your Touchstone Energy® Cooperative

BASED ON 2018 YEAR-END DATA
UNLESS OTHERWISE NOTED



\$2.5M

CASH BACK TO
MEMBERS



3 ADDITIONAL
MEGAWATTS SOLAR
BREAKING GROUND

108,000
MEMBERS

SCHOLARSHIP
DONATIONS
\$1.6M
SINCE 1990

MEMBERS' SAVED
26.4
MILLION kWh
WITH
CONSERVATION
PROGRAMS

700,000
NUMBER OF
MEMBER ACCOUNTS

28
MEMBER-OWNER
COOPERATIVES

99.99%
RELIABLE
TRANSMISSION SYSTEM



SINCE 2005
38% REDUCTION IN
CO₂
EMISSIONS



POWERING WHAT'S POSSIBLE

50%
2030
ON TRACK FOR 50% RENEWABLES BY 2030

\$15M
CASH BACK TO
MEMBERS
IN 2019



DAKOTA ELECTRIC'S
WHOLESALE
POWER PROVIDER

NEW METER UPDATE

Dakota Electric is in the process of updating old meters to advanced digital meters.



Benefits

- Increased system efficiencies
- Improved outage notification & restoration
- More energy information for members
- Replacement of aging infrastructure

This fall we plan to install a limited number of meters and equipment to verify operation and performance of the interconnected systems. If all is in order, we will begin the installation of new meters in 2020, with meter installation taking approximately 24 months. Prior to installation, members will receive a postcard notification by mail informing them of when they can expect their meter to be upgraded.



FOR MORE INFORMATION, VISIT
WWW.DAKOTAELECTRIC.COM/METERS

Cold Weather Rule

Are you struggling to pay your utility bills? Members can avoid disconnection or be eligible for reconnection between Oct. 15 and April 15 by following steps outlined by Minnesota's Cold Weather Rule.

Watch for your September bill statement between Sept. 11 and Oct. 9. The bill will include a Cold Weather Rule brochure with more information on program details and contact information for agencies that provide utility payment assistance.



FOR MORE INFORMATION, VISIT
WWW.DAKOTAELECTRIC.COM >
[BILLING & PAYMENT](#) > [ELECTRIC RATES](#)
& [CONSUMER RIGHTS](#)

Assistance for military service personnel

If a member is ordered into active duty, for deployment or for a change of duty station, Minnesota law may protect these military personnel and their families from shutoff if they cannot pay their utility bills in full.

Call 651-463-6212 to get an application and set up a payment plan. You must keep your payment plan to qualify for protection.



FOR MORE INFORMATION, VISIT
WWW.DAKOTAELECTRIC.COM >
[BILLING & PAYMENT](#) >
[FINANCIAL ASSISTANCE](#)



4300 220th Street West
Farmington, MN 55024

UPCOMING EVENTS

- **Board Meeting**
Sept. 26, 8:30 a.m.
- **Labor Day**
Sept. 2, Office closed
- **Wind Tours**
Sept. 5, 8 a.m. to 4 p.m.
Sept. 6, 8 a.m. to 4 p.m.

VIEW MORE
PHOTOS ON
FACEBOOK



dakotaelectric.com/event-calendar

PRSRT STD
U.S. POSTAGE
PAID
DAKOTA ELECTRIC
ASSOCIATION

CONNECT WITH US!



DakotaElectric



@DakotaElec



DakotaElectric



Dakota Electric Association

DAKOTAELECTRIC.COM

MEMBER APPRECIATION EVENT



inside September 2019
CIRCUITS
For Dakota Electric Members

GRAND
OPENING OF
DAKOTA
SOLAR III

