

ENERGYWISE

FOR YOUR HOME



A new era begins in your garage. Save money every time you charge your plug-in electric car with two ChargeWise options that let you choose what time to charge your car and how much to pay. Plus, grab a rebate of up to \$500 on installing the charging station.

You'll wake up fully charged and get off to a great start—now and for many mornings to come.

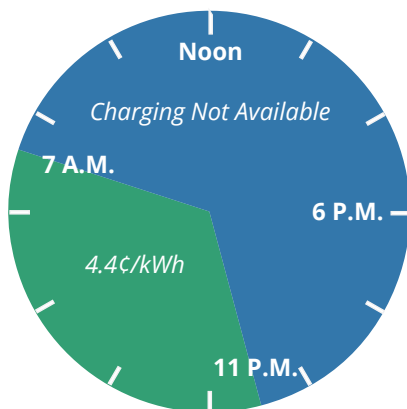


ELECTRIC VEHICLE (EV) PROGRAMS

Dakota Electric® offers two voluntary options for charging your EV at home. The storage program offers the lowest price, while the time-of-use program provides the most flexibility. Additional outlets for your EV that are not off-peak outlets are prohibited when participating in this program.

Dakota Electric also offers a rebate of up to \$500 to cover the cost of installing a charger on either program.

EVERY DAY



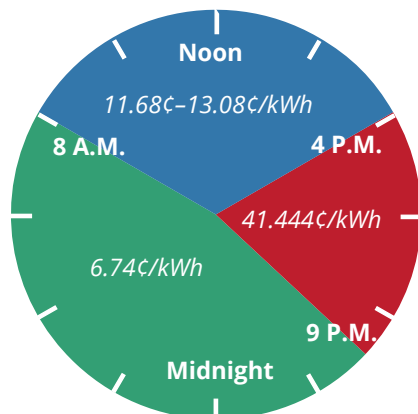
Off-peak storage rate[†]

Dakota Electric's storage rate offers members the lowest-cost off-peak electricity for charging an EV, but the hours available are the most restrictive. Electricity for charging your EV is available only during off-peak hours. Power will not be supplied outside of the off-peak hours and the circuit must be dedicated to EV charging.

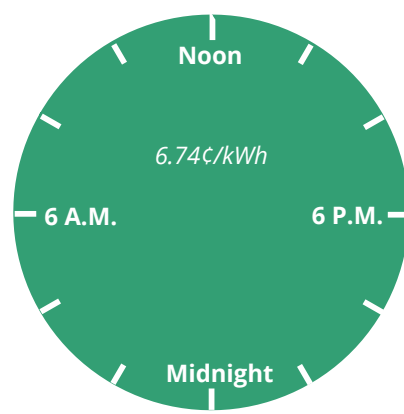
Time-of-use rate[†]

A charger installed on Dakota Electric's time-of-use rate will always receive electricity, so you can charge your vehicle whenever needed. A special meter is installed that allows the rate to fluctuate based on the time of day you charge your EV.

MONDAY - FRIDAY



WEEKENDS AND HOLIDAYS



*Holidays include New Years Day, Memorial Day, Independence Day, Labor Day, Thanksgiving Day and Christmas Day.

[†]Additional cost for taxes and the Resource and Tax Adjustment (RTA) applies.

Electric vehicle program details

Off-peak storage ([Schedule 51](#)) and time-of-use ([Schedule EV-1](#)) participants

Metering:

- Electric service for electric vehicles under either schedule must be supplied through a sub-metered circuit (installed at the consumer's expense) and approved charging equipment.
- Installations must conform to the Association's [specifications](#).
- Submeter must be located outside and preferably outside of fenced areas for readings and maintenance. The consumer shall supply, at no expense to Dakota Electric, a [suitable location](#) for meters and associated equipment used for billing.
- Sub-meter socket installations must pass the state or local electric inspection before the sub-meter will be set.

Availability

- EV rate participation is on a voluntary basis for consumers taking service under [Schedule 31](#), our residential rate.
- Service is limited to electric vehicles that are SAE J1772 compliant and registered and operable on public highways in the State of Minnesota.
- Low-speed electric vehicles, including golf carts, are ineligible to take service under this tariff even if licensed to operate on public streets.
- The consumer may be required to provide the Association with proof of registration of the electric vehicle prior to taking service under either tariff.

Terms and conditions

- Some technologies and equipment may not be compatible with our rate and service combinations. Please contact Energy Services at 651-463-6243 if you have questions.
- Internal wiring and equipment failures on member-owned equipment are the responsibility and liability of the member. Ex: External relay failures, tripped GFCI breakers
- By participating in Schedule 51 or Time of Use, you understand that installing a 240v circuit for electric vehicle charging without enrolling it on either program will disqualify you from all electric vehicle rates and rebates.

EV charging with on-site solar (PV) generation

- Accounts with on-site solar are eligible to participate in either EV rate. However, Time-of-Use electric vehicle consumption is metered separately from solar production, and vehicles will be charged peak pricing for energy used within the peak time frame even if the energy is being sourced from the on-site solar system. We recommend solar generating members only charge their vehicle during overnight hours when participating in Time-of-Use.

If you have questions, please contact one of our energy services representatives at the phone number or email listed below.



CONTACT THE ENERGY EXPERTS®

Dakota Electric Association®
4300 220th Street West
Farmington, MN 55024
651-463-6243 • 800-874-3409
www.dakotaelectric.com

